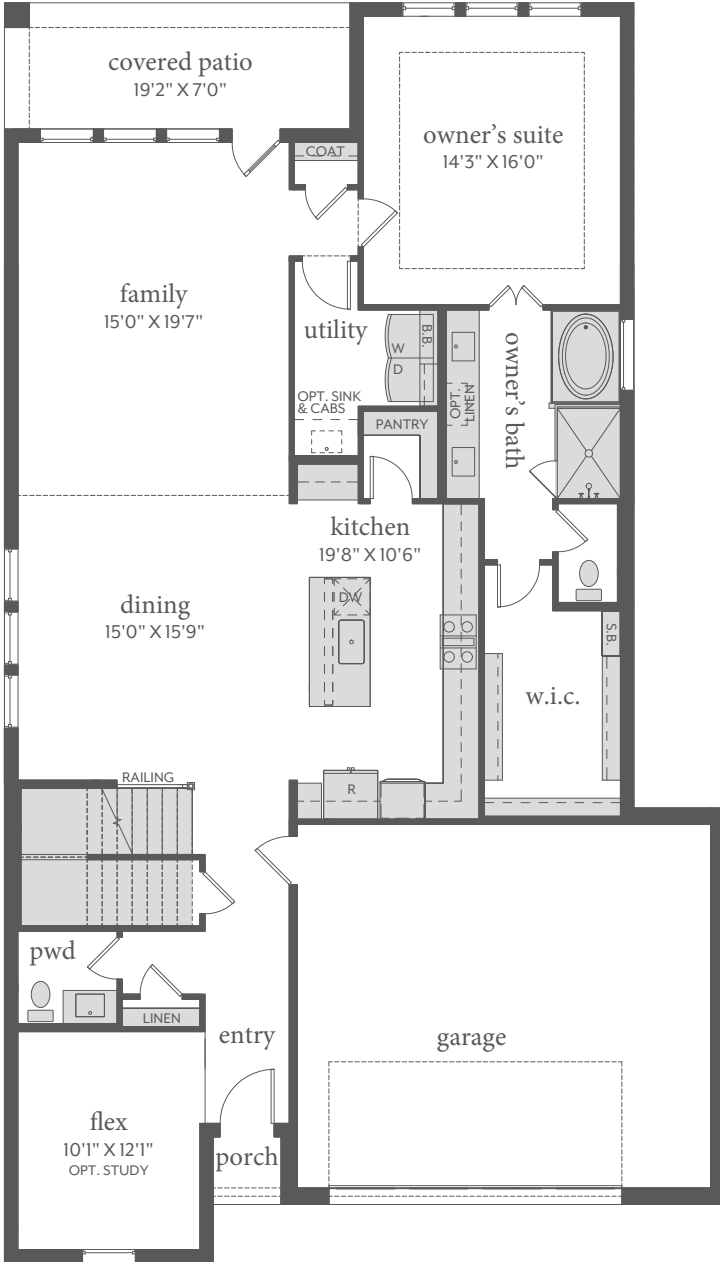
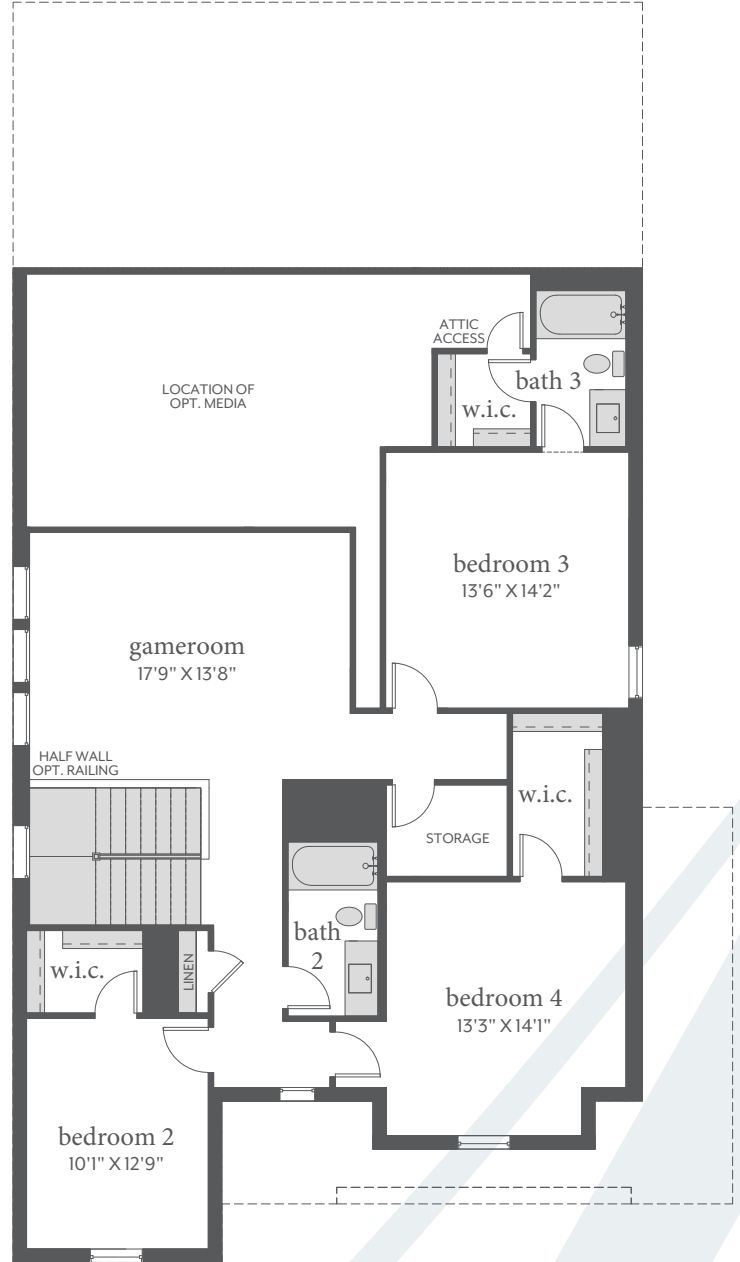


# Painted Tree

MARSEILLE | 3,085 Sq. Ft.\* | 4 | 3.5 | 2



FIRST FLOOR - ELEVATION A\*



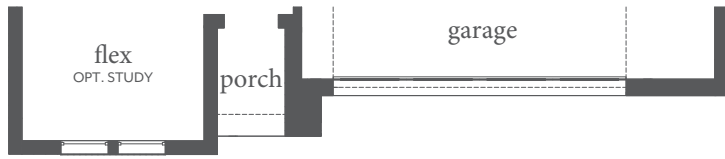
SECOND FLOOR - ELEVATION A\*



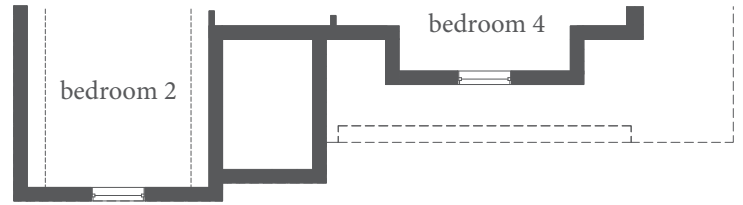
All dimensions and square footage are approximate at Painted Tree and subject to change. Illustrations are artist's conception and not reproductions of original plans. The Normandy Homes policy of continual attention to design and construction requires that specifications, equipment and dimensions be subject to change without notice. Certain options can change room count. Please consult Community Sales Manager for details. 1.14.2022

# Painted Tree

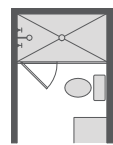
MARSEILLE | 3,085 Sq. Ft.\* | 4 | 3.5 | 2



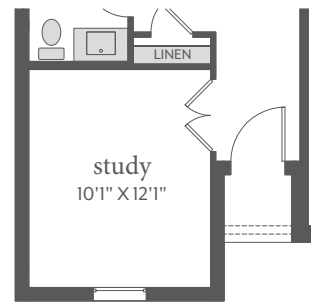
FIRST FLOOR - ELEVATION B



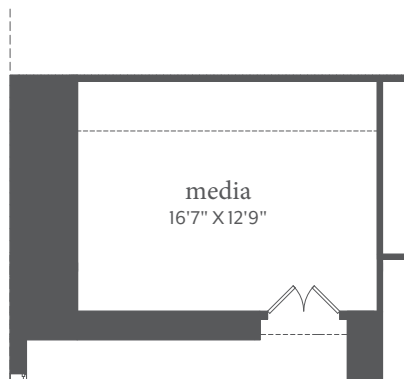
SECOND FLOOR - ELEVATION B



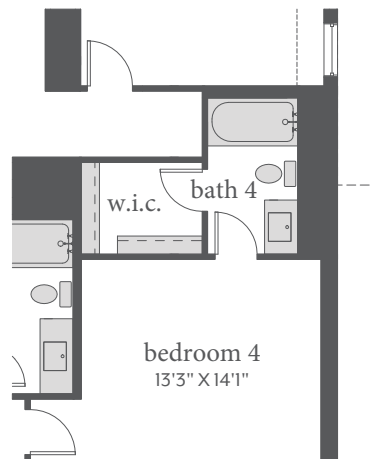
OPT. SHOWER ILO TUB  
BATHS 2, 3 & 4



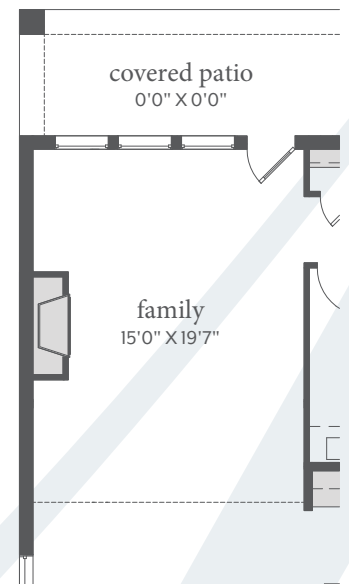
OPT. STUDY ILO FLEX



OPT. MEDIA



OPT. BATH 4



OPT. FIREPLACE



All dimensions and square footage are approximate at Painted Tree and subject to change. Illustrations are artist's conception and not reproductions of original plans. The Normandy Homes policy of continual attention to design and construction requires that specifications, equipment and dimensions be subject to change without notice. Certain options can change room count. Please consult Community Sales Manager for details. 1.14.2022