
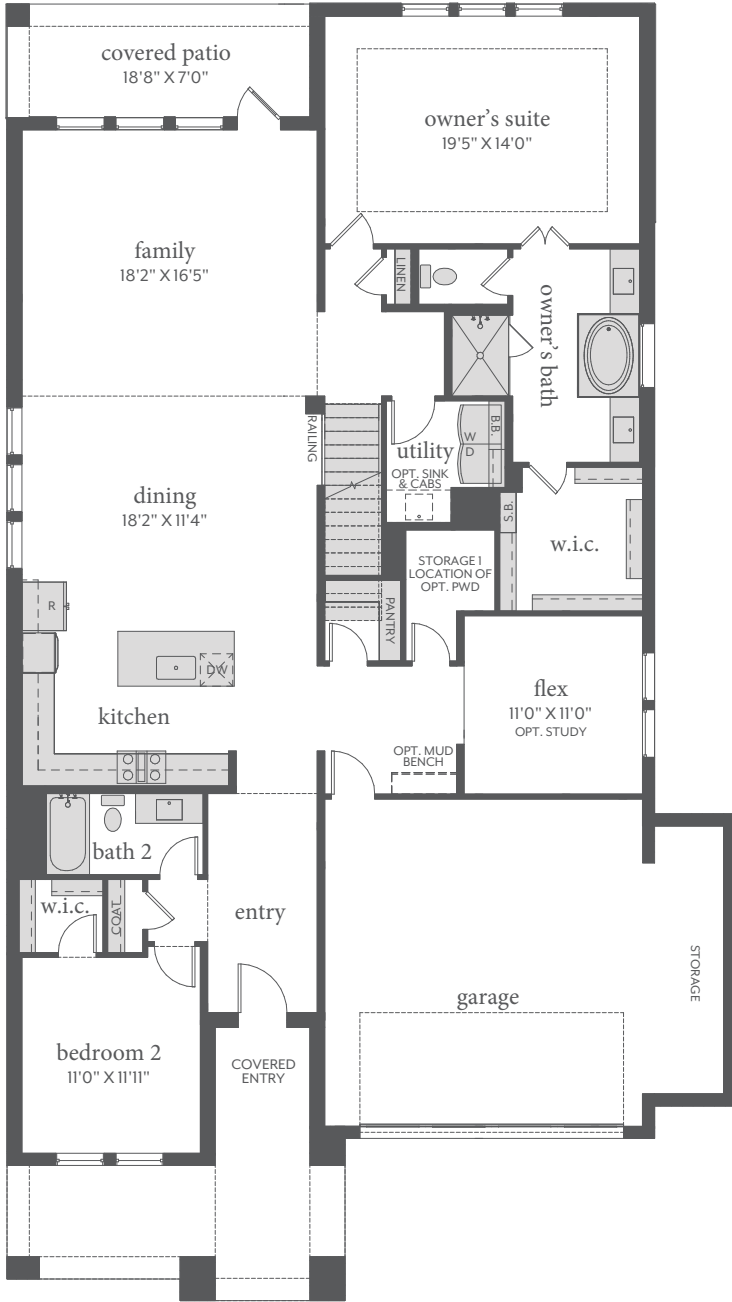
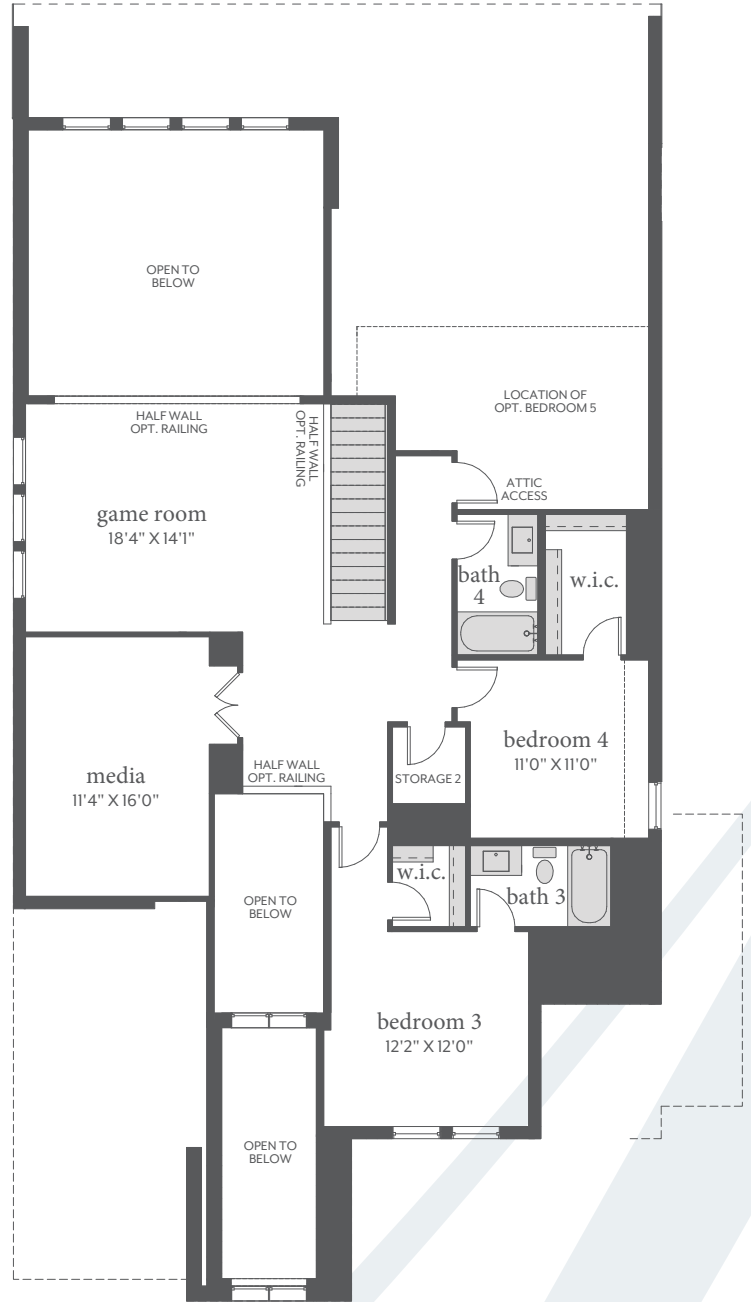


# windsong ranch

VERSAILLES II | 61' Series | 3,423 Sq. Ft.\* |  4 |  4 |  2



FIRST FLOOR - ELEVATION B\*



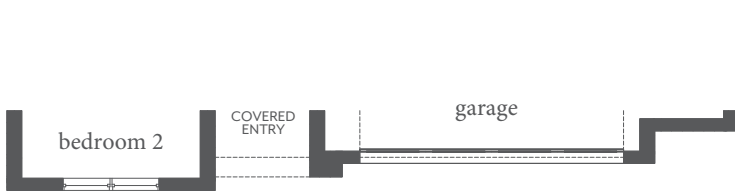
SECOND FLOOR - ELEVATION B\*



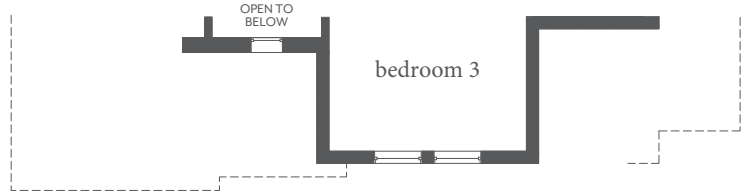
All dimensions and square footage are approximate at Windsong Ranch and subject to change. Illustrations are artist's conception and not reproductions of original plans. The Normandy Homes policy of continual attention to design and construction requires that specifications, equipment and dimensions be subject to change without notice. Certain options can change room count. Please consult Community Sales Manager for details. 2022

# windsong ranch

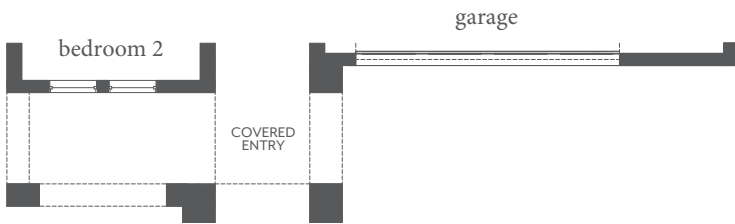
VERSAILLES II | 61' Series | 3,423 Sq. Ft.\* | 4 | 4 | 2



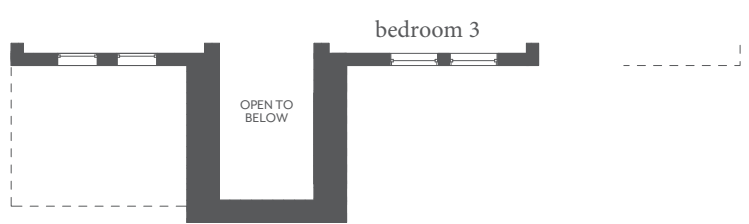
FIRST FLOOR - ELEVATION C



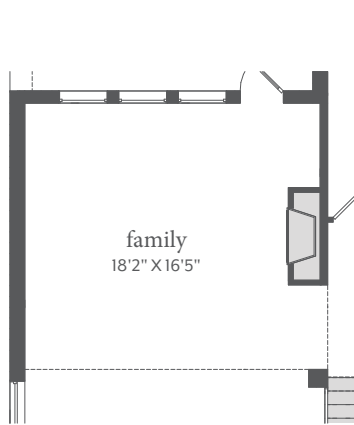
SECOND FLOOR - ELEVATION C



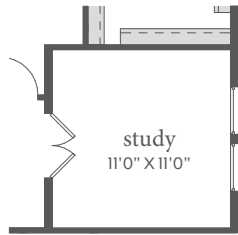
FIRST FLOOR - ELEVATION D



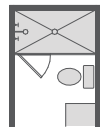
SECOND FLOOR - ELEVATION D



OPT. FIREPLACE



OPT. STUDY ILO FLEX



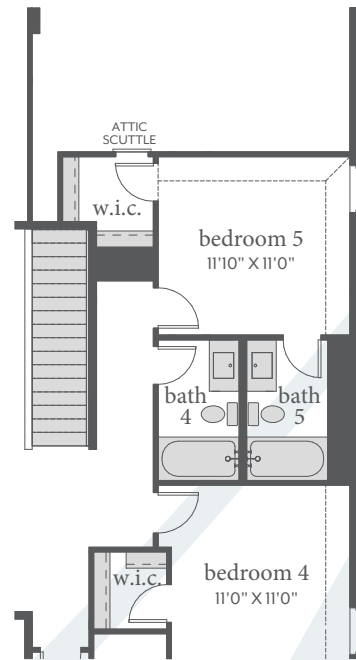
OPT. SHOWER  
BATH 2, 3, 4, 5



OPT. POWDER ILO  
STORAGE 1



OPT. FREESTANDING TUB



OPT. BEDROOM 5 / BATH 5



All dimensions and square footage are approximate at Windsong Ranch and subject to change. Illustrations are artist's conception and not reproductions of original plans. The Normandy Homes policy of continual attention to design and construction requires that specifications, equipment and dimensions be subject to change without notice. Certain options can change room count. Please consult Community Sales Manager for details. 2022