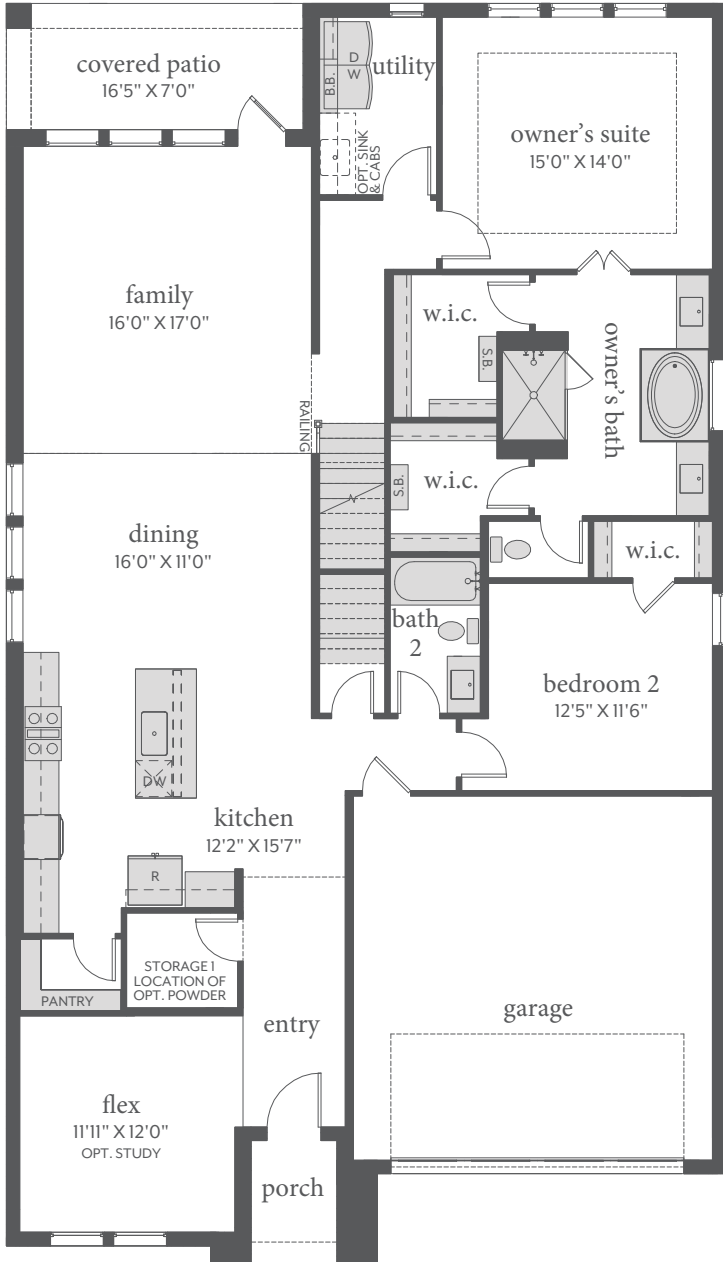
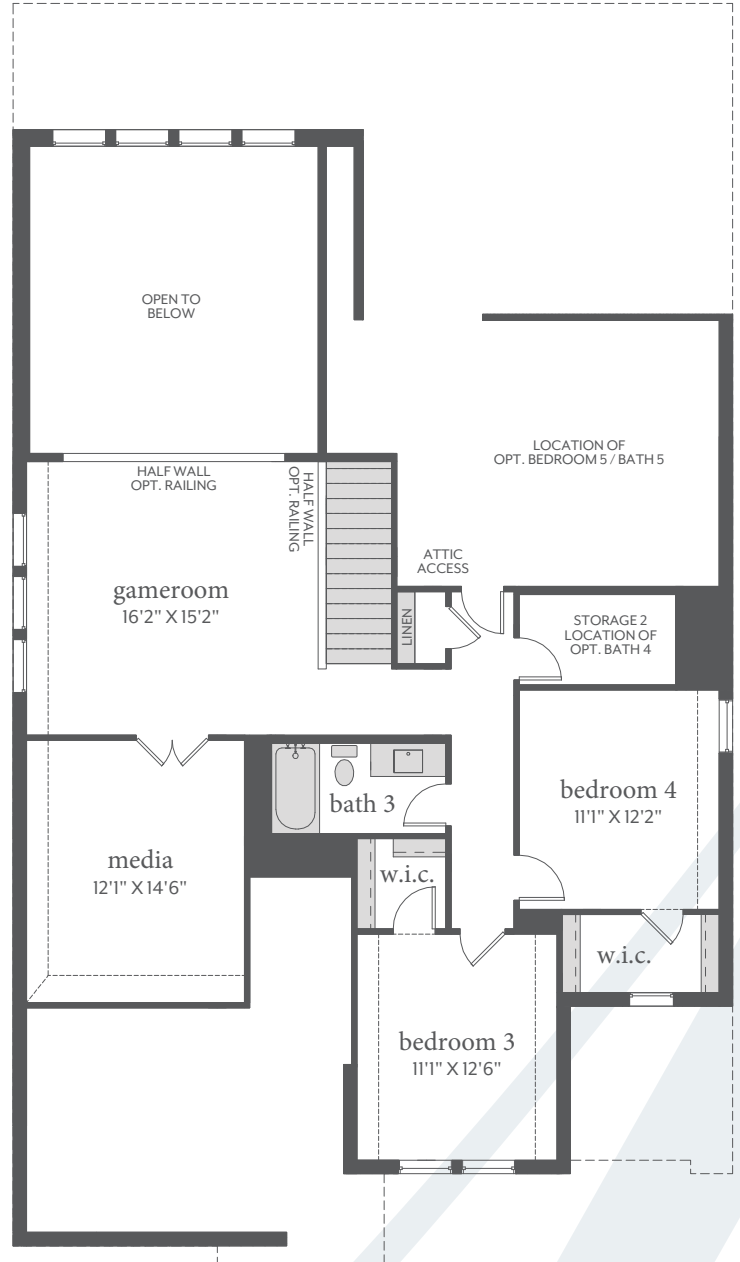


# estates at stacy crossing

ORLEANS | 3,168 Sq. Ft.\* | 4 | 3 | 2



FIRST FLOOR - ELEVATION A\*



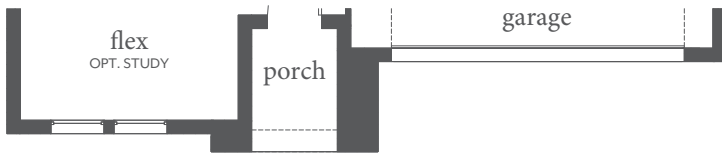
SECOND FLOOR - ELEVATION A\*



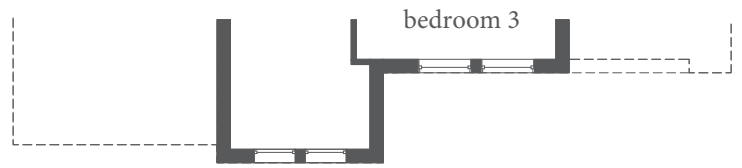
All dimensions and square footage are approximate at Estates at Stacy Crossing and subject to change. Illustrations are artist's conception and not reproductions of original plans. The Normandy Homes policy of continual attention to design and construction requires that specifications, equipment and dimensions be subject to change without notice. Certain options can change room count. Please consult Community Sales Manager for details. 1.14.2022

# estates at stacy crossing

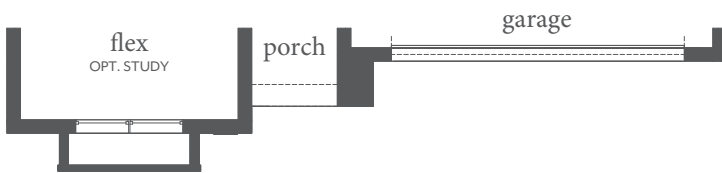
ORLEANS | 3,168 Sq. Ft.\* | 🛏️ 4 | 🚿 3 | 🚗 2



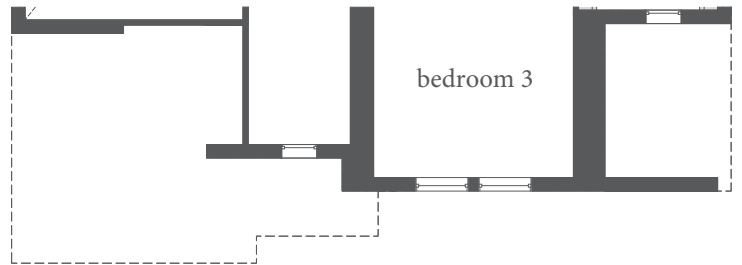
FIRST FLOOR - ELEVATION B



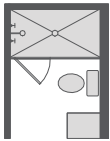
SECOND FLOOR - ELEVATION B



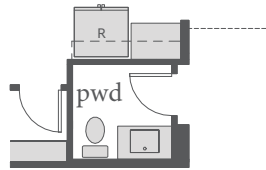
FIRST FLOOR - ELEVATION C



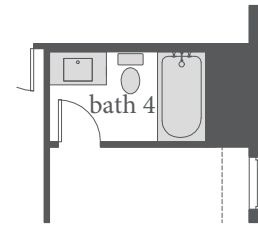
SECOND FLOOR - ELEVATION C



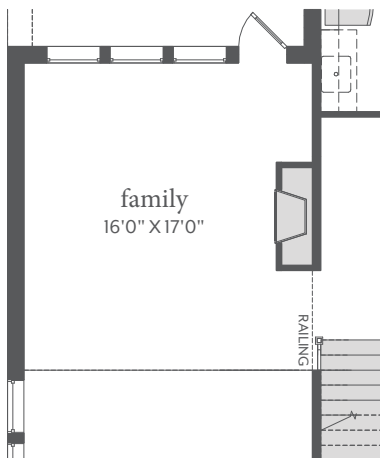
OPT. SHOWER I/O TUB  
BATHS 2, 3, 4 & 5



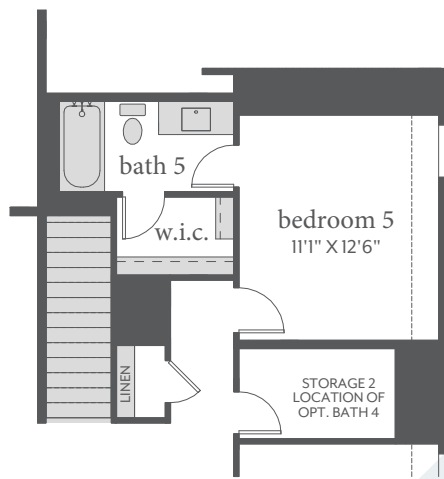
OPT. POWDER I/O  
STORAGE 1



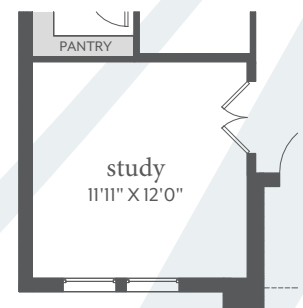
OPT. BATH 4 AT BEDROOM 4  
I/O STORAGE 2



OPT. FIREPLACE



OPT. BEDROOM 5 / BATH 5



OPT. STUDY I/O FLEX



All dimensions and square footage are approximate at Estates at Stacy Crossing and subject to change. Illustrations are artist's conception and not reproductions of original plans. The Normandy Homes policy of continual attention to design and construction requires that specifications, equipment and dimensions be subject to change without notice. Certain options can change room count. Please consult Community Sales Manager for details. 1.14.2022