

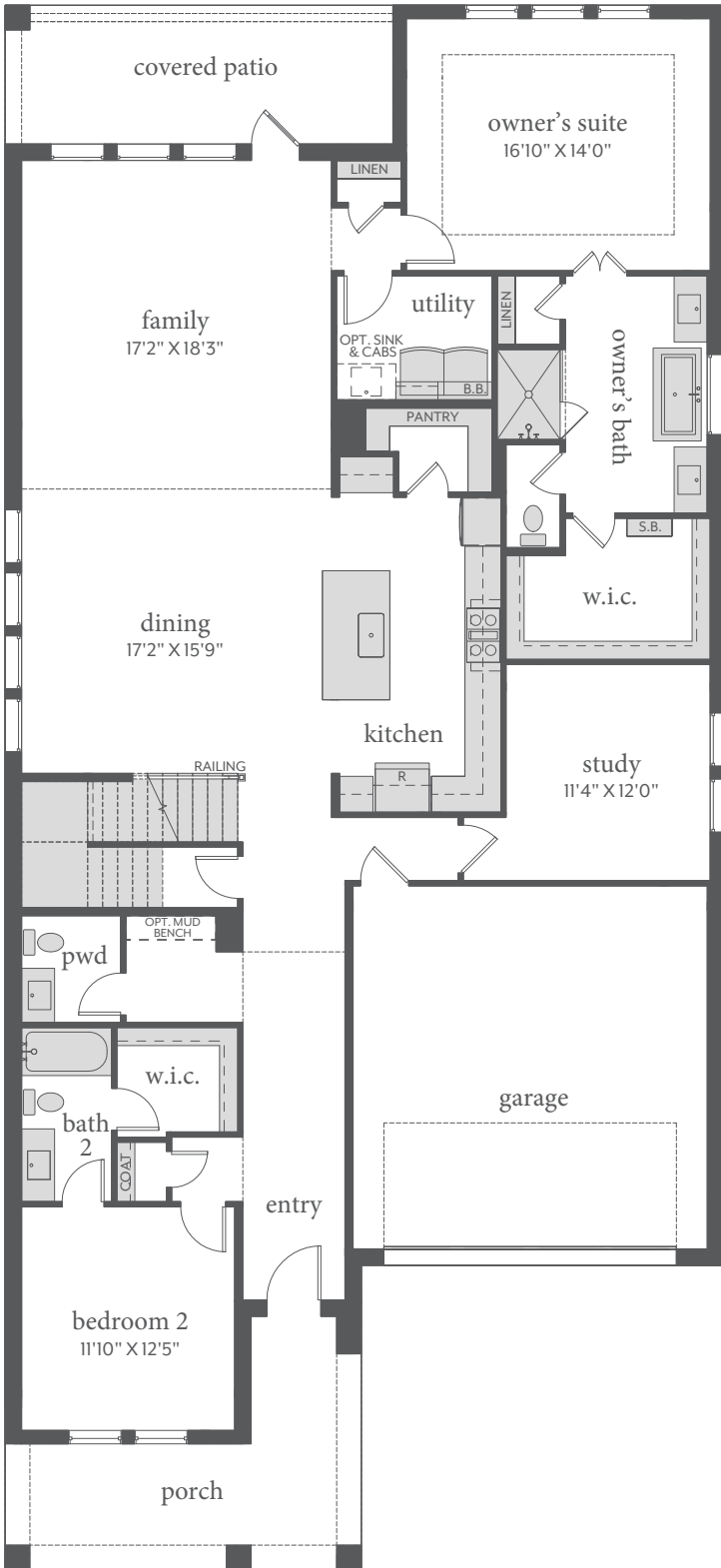
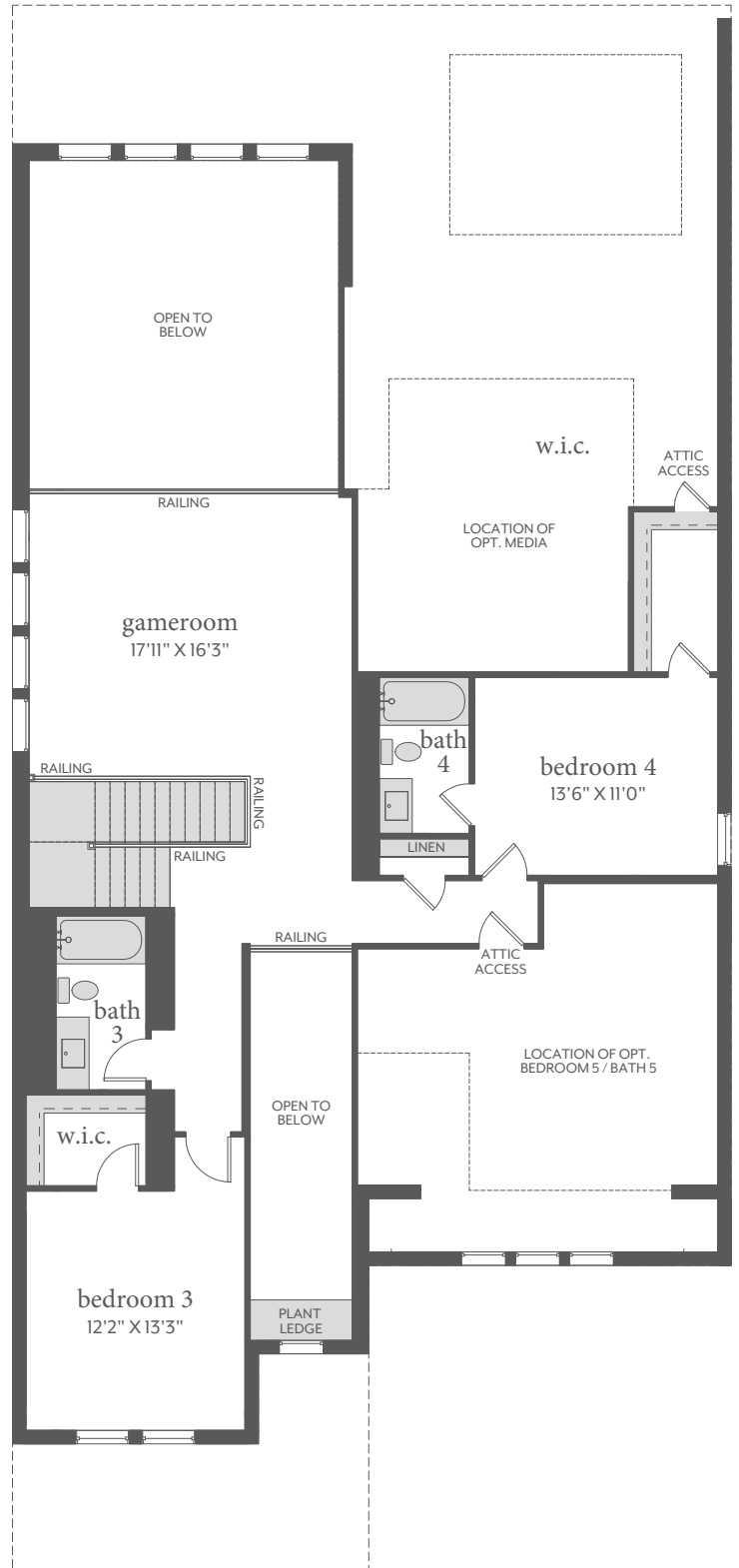


village on main street

ROUSSEAU | 55' Series | 3,414 Sq. Ft.* |  4 |  4.5 |  2



FIRST FLOOR - ELEVATION A*



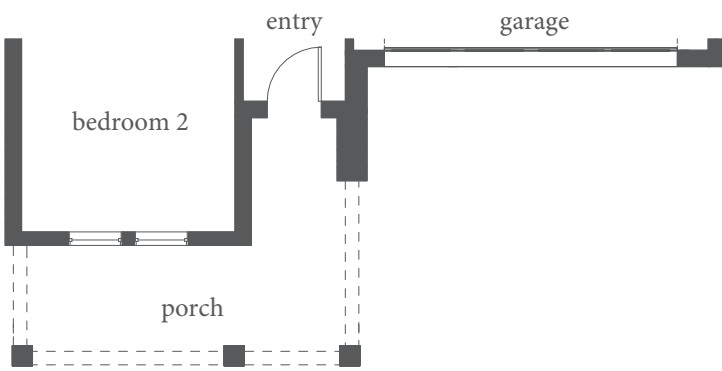
SECOND FLOOR - ELEVATION A*



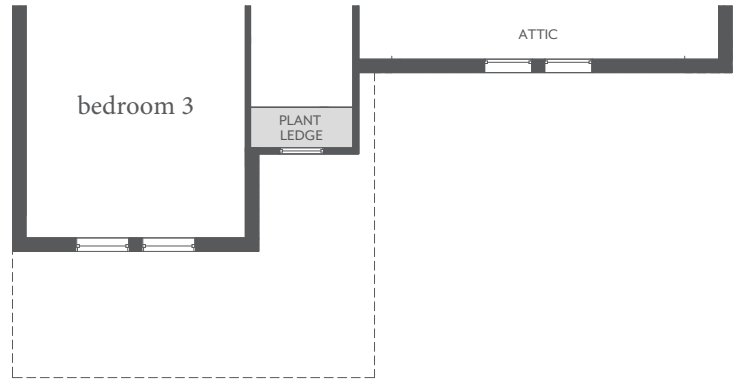
All dimensions and square footage are approximate at Village on Main and subject to change. Illustrations are artist's conception and not reproductions of original plans. The Normandy Homes policy of continual attention to design and construction requires that specifications, equipment and dimensions be subject to change without notice. Certain options can change room count. Please consult Community Sales Manager for details. 9.15.2023 © 2023 Normandy Homes. All rights reserved. Normandy Homes is a subsidiary of Green Brick Partners (NYSE: GRBK).

village on main street

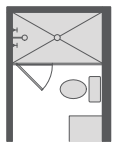
ROUSSEAU | 55' Series | 3,414 Sq. Ft.* | 4 | 4.5 | 2



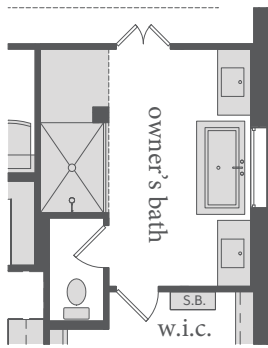
FIRST FLOOR - ELEVATION B



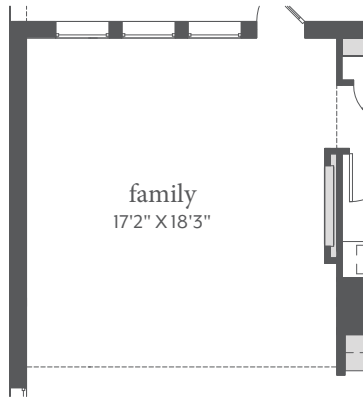
SECOND FLOOR - ELEVATION B



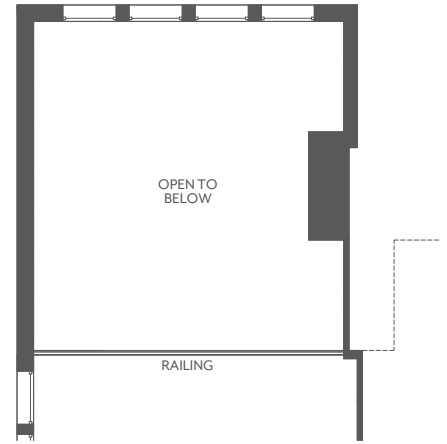
OPT. SHOWER ILO TUB BATHS 2, 3, 4 & 5



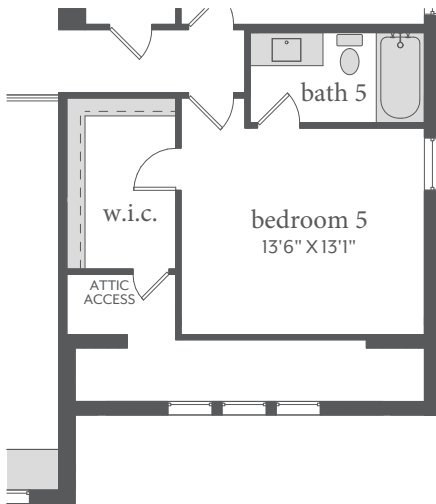
OPT. OWNER'S SHOWER W/ NO DOOR



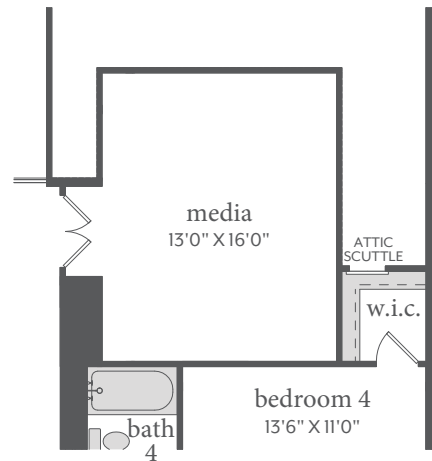
OPT. ELECTRIC FIREPLACE



OPT. FIREPLACE AT 2ND FLOOR



OPT. BEDROOM 5 / BATH 5



OPT. MEDIA



All dimensions and square footage are approximate at Village on Main and subject to change. Illustrations are artist's conception and not reproductions of original plans. The Normandy Homes policy of continual attention to design and construction requires that specifications, equipment and dimensions be subject to change without notice. Certain options can change room count. Please consult Community Sales Manager for details. 9.15.2023 © 2023 Normandy Homes. All rights reserved. Normandy Homes is a subsidiary of Green Brick Partners (NYSE: GRBK).